



GENEL KATALOG
GENERAL CATALOGUE

TIPSAN®

Screw Set



Ref. Number : 18008030001



Screw Set
Ref. Number : 18008030001

Ref.Number	Description		Pieces	Ref.Number	Description		Pieces
10802011003	Cortical Screw	14	7	10802061008	Cancellous Screw with 16mm Threaded	60	2
10802011004	Cortical Screw	16	7	10802061009	Cancellous Screw with 16mm Threaded	65	1
10802011005	Cortical Screw	18	7	10802061010	Cancellous Screw with 16mm Threaded	70	1
10802011006	Cortical Screw	20	7	10802061011	Cancellous Screw with 16mm Threaded	75	1
10802011007	Cortical Screw	22	7	10802061012	Cancellous Screw with 16mm Threaded	80	1
10802011008	Cortical Screw	24	7	10802061013	Cancellous Screw with 16mm Threaded	85	1
10802011009	Cortical Screw	26	7	10802061014	Cancellous Screw with 16mm Threaded	90	1
10802011010	Cortical Screw	28	7	10802061015	Cancellous Screw with 16mm Threaded	95	1
10802011011	Cortical Screw	30	14	10802061016	Cancellous Screw with 16mm Threaded	100	1
10802011012	Cortical Screw	32	12	10802061017	Cancellous Screw with 16mm Threaded	105	1
10802011013	Cortical Screw	34	12	10802061018	Cancellous Screw with 16mm Threaded	110	1
10802011014	Cortical Screw	36	12	10802071004	Cancellous Screw with 32mm Threaded	40	2
10802011015	Cortical Screw	38	12	10802071005	Cancellous Screw with 32mm Threaded	45	2
10802011016	Cortical Screw	40	12	10802071006	Cancellous Screw with 32mm Threaded	50	2
10802011017	Cortical Screw	42	6	10802071007	Cancellous Screw with 32mm Threaded	55	2
10802011018	Cortical Screw	44	12	10802071008	Cancellous Screw with 32mm Threaded	60	2
10802011019	Cortical Screw	46	6	10802071009	Cancellous Screw with 32mm Threaded	65	1
10802011020	Cortical Screw	48	6	10802071010	Cancellous Screw with 32mm Threaded	70	1
10802011022	Cortical Screw	52	6	10802071011	Cancellous Screw with 32mm Threaded	75	1
10802011024	Cortical Screw	56	6	10802071012	Cancellous Screw with 32mm Threaded	80	1
10802031001	Small Cortical Screw 1,25 pitch	10	4	10802071013	Cancellous Screw with 32mm Threaded	85	1
10802031002	Small Cortical Screw 1,25 pitch	12	4	10802071014	Cancellous Screw with 32mm Threaded	90	1
10802031003	Small Cortical Screw 1,25 pitch	14	4	10802071015	Cancellous Screw with 32mm Threaded	95	1
10802031004	Small Cortical Screw 1,25 pitch	16	4	10802071016	Cancellous Screw with 32mm Threaded	100	1
10802031005	Small Cortical Screw 1,25 pitch	18	4	10802071017	Cancellous Screw with 32mm Threaded	105	1
10802031006	Small Cortical Screw 1,25 pitch	20	4	10802071018	Cancellous Screw with 32mm Threaded	110	1
10802031007	Small Cortical Screw 1,25 pitch	22	4	10802101002	Malleolar Screw	25	4
10802031008	Small Cortical Screw 1,25 pitch	24	4	10802101003	Malleolar Screw	30	4
10802031009	Small Cortical Screw 1,25 pitch	26	4	10802101004	Malleolar Screw	35	4
10802031010	Small Cortical Screw 1,25 pitch	28	4	10802101005	Malleolar Screw	40	4
10802031011	Small Cortical Screw 1,25 pitch	30	4	10802101006	Malleolar Screw	45	4
10802031014	Small Cortical Screw 1,25 pitch	36	4	10802101007	Malleolar Screw	50	4
10802031016	Small Cortical Screw 1,25 pitch	40	4	10802101008	Malleolar Screw	55	6
10802061001	Cancellous Screw with 16mm Threaded	25	4	10802101009	Malleolar Screw	60	2
10802061002	Cancellous Screw with 16mm Threaded	30	4	10802101010	Malleolar Screw	65	2
10802061003	Cancellous Screw with 16mm Threaded	35	4	10802101011	Malleolar Screw	70	2
10802061004	Cancellous Screw with 16mm Threaded	40	2	10802101012	Malleolar Screw	75	2
10802061005	Cancellous Screw with 16mm Threaded	45	2	10802101013	Malleolar Screw	80	2
10802061006	Cancellous Screw with 16mm Threaded	50	2	10804001001	Screw Washer	10	10
10802061007	Cancellous Screw with 16mm Threaded	55	4	10804001002	Screw Washer	13	10



Section of Mini Bone Screws

Mini Cortical Screws

Mini Corticalissschrauben

Mini vis corticales



1.5 Ø Mini Cortical Screws: To be used in interfragmental compression in strong cortical bone of the metatarsals, metacarpals and proximal phalanx. Buttress thread form provides enhanced pull-out resistance in cortical bone. Also used for fixation of mini fragment plates.

Twist drill recommended: Ø 1.1 mm

2.0 Ø Mini Cortical Screws: To be used in interfragmental compression in strong cortical bone of the metatarsals, metacarpals and proximal phalanx. Buttress thread form provides enhanced pull-out resistance in cortical bone. Also used for fixation of mini fragment plates.

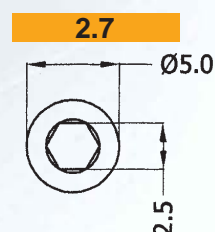
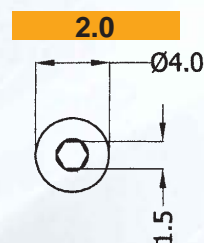
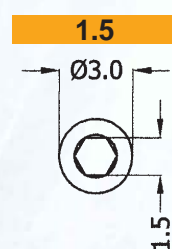
Twist drill recommended: Ø 1.5 mm

2.7 Ø Mini Cortical Screws: To be used in interfragmental compression in strong cortical bone of the metatarsals, metacarpals and proximal phalanx. Also used for fixation of special mini plates for hand and for foot surgery. Including quarter tubular plates and mini self-compression plates.

Twist drill recommended: Ø 2.0 mm

Material : Certified Stainless Steel according to ASTM F.138 - ISO 5832/1.

Thread Diam.	1.5	2.0	2.7
Head Diam.	3.0	4.0	5.0
Hex. Socket	1.5	1.5	2.5
Length mm			
6	10802111001	10802121001	
8	10802111002	10802121002	
10	10802111003	10802121003	10802041001
12	10802111004	10802121004	10802041002
14	10802111005	10802121005	10802041003
16	10802111006	10802121006	10802041004
18	10802111007	10802121007	10802041005
20	10802111008	10802121008	10802041006
22	10802111009	10802121009	10802041007
24	10802111010	10802121010	10802041008
26		10802121011	10802041009
28		10802121012	10802041010
30		10802121013	10802041011
32		10802121014	10802041012
34		10802121015	10802041013
35			
36		10802121016	10802041014
38		10802121017	10802041015
40		10802121018	10802041016
45			10802041017





Section of Small Bone Screws

Small Cortical Screws

Kleine Corticalisschrauben

Petites vis corticales



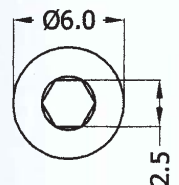
3.5 ø Small Cortical Screws : Fully threaded screw with fine thread (pitch.1.25 mm) for use in interfragmental compression in small cancellous bone and small plate fixation. Available with thread pitch 1.75 mm.
Twist drill recommended: Ø 2.5 mm

4.0 ø Small Cancellous Screws : Fully threaded screws for use in interfragmental compression in small cancellous bone. Not to be used as lag screw. But partially threaded screw for use as lag screw in fragment fixation. Deep buttress thread form provides enhanced pull-out resistance. Used in conjunction with one-third tubular plates and other small plates.
Twist drill recommended: Ø 2.5 mm - thread pitch 1.75 mm

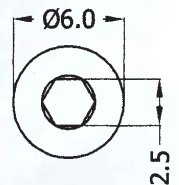
Material : Certified Stainless Steel according to ASTM F.138 - ISO 5832/1.

Thread Diam.	3.5	3.5	4.0	4.0
Head Diam.	6.0	6.0	6.0	6.0
Hex. Socket	2.5	2.5	2.5	2.5
Length mm	Pitch 1.25	Pitch 1.75	Fully Threaded	Short Thread
10	10802031001	10802021001	10802171001	10802051001
12	10802031002	10802021002	10802171002	10802051002
14	10802031003	10802021003	10802171003	10802051003
16	10802031004	10802021004	10802171004	10802051004
18	10802031005	10802021005	10802171005	10802051005
20	10802031006	10802021006	10802171006	10802051006
22	10802031007	10802021007	10802171007	10802051007
24	10802031008	10802021008	10802171008	10802051008
26	10802031009	10802021009	10802171009	10802051009
28	10802031010	10802021010	10802171010	10802051010
30	10802031011	10802021011	10802171011	10802051011
32	10802031012	10802021012	10802171012	
34	10802031013	10802021013	10802171013	
35				10802051012
36	10802031014	10802021014	10802171014	
38	10802031015	10802021015	10802171015	
40	10802031016	10802021016	10802171016	10802051013
42			10802171017	
44			10802171018	
45	10802031017	10802021017		10802051014
46			10802171019	
48			10802171020	
50	10802031018	10802021018	10802171021	10802051015
52			10802171022	
54			10802171023	
56			10802171024	
58			10802171025	
60			10802171026	

3.5



4.0





Section of Large Bone Screws

Large Cortical Screws

Grosse Corticalisschrauben

Grandes vis à corticales



4.5 ø Large Cortical Screws : Primarily used in interfragmental compression bone plates and used in hard cortical bone where buttress thread form provide enhanced pull-out resistance. Used alone for fragment fixation, including use as a lag screw. Available in self-tapping.

Twist drill recommended: Ø 3.2 mm

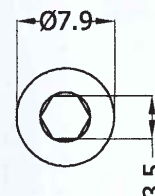
4.5 ø Malleolar Screws : These partially threaded screws are used for the fixation of small fragments in cancellous bone. The head has a hexagonal socket and the screw is inserted by using a screwdriver.

Twist drill recommended: Ø 3.2 mm

Material : Certified Stainless Steel according to ASTM F.138 - ISO 5832/1.

Thread Diam.	4.5	4.5	4.5	Thread Diam.
Head Diam.	8.0	8.0	8.0	Head Diam.
Hex. Socket	3.5	3.5	3.5	Hex. Socket
Length mm	Cortical	Cortical Self-tapping	Malleolar	Length mm
10	10802011001	10802371001	10802101001	20
12	10802011002	10802371002	10802101002	25
14	10802011003	10802371003	10802101003	30
16	10802011004	10802371004	10802101004	35
18	10802011005	10802371005	10802101005	40
20	10802011006	10802371006	10802101006	45
22	10802011007	10802371007	10802101007	50
24	10802011008	10802371008	10802101008	55
26	10802011009	10802371009	10802101009	60
28	10802011010	10802371010	10802101010	65
30	10802011011	10802371011	10802101011	70
32	10802011012	10802371012	10802101012	75
34	10802011013	10802371013	10802101013	80
36	10802011014	10802371014		
38	10802011015	10802371015		
40	10802011016	10802371016		
42	10802011017	10802371017		
44	10802011018	10802371018		
46	10802011019	10802371019		
48	10802011020	10802371020		
50	10802011021	10802371021		
52	10802011022	10802371022		
54	10802011023	10802371023		
56	10802011024	10802371024		
58	10802011025	10802371025		
60	10802011026	10802371026		
62	10802011027	10802371027		
64	10802011028	10802371028		
66	10802011029	10802371029		
68	10802011030	10802371030		
70	10802011031	10802371031		

4.5





Section of Cancellous Bone Screws

Cancellous Screws Spongiosaschrauben Vis spongieuses

6.5 Ø Cancellous Screws : The main indication for using cancellous screws is when the cortex is thinner than 3.5 mm. The short threaded screws (16 mm) are used for fractures of the femoral neck in adolescents; separated epiphysis and for certain fractures of the tibial plateau. The long threaded screws (32 mm) are used for fractures in the vicinity of joints. The head has a hexagonal socket and the screw is inserted by using screwdriver.

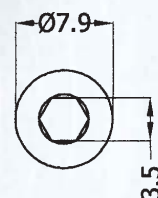
Twist drill recommended: Ø 3.2 mm

Material : Certified Stainless Steel according to ASTM F.138 - ISO 5832/1.



Thread Diam.	6.5	6.5	6.5
Head Diam.	8.0	8.0	8.0
Hex. Socket	3.5	3.5	3.5
Length mm	16mm Thread	32mm Thread	Fully Threaded
25	10802061001		10802131001
30	10802061002		10802131002
35	10802061003	10802071003	10802131003
40	10802061004	10802071004	10802131004
45	10802061005	10802071005	10802131005
50	10802061006	10802071006	10802131006
55	10802061007	10802071007	10802131007
60	10802061008	10802071008	10802131008
65	10802061009	10802071009	10802131009
70	10802061010	10802071010	10802131010
75	10802061011	10802071011	10802131011
80	10802061012	10802071012	10802131012
85	10802061013	10802071013	10802131013
90	10802061014	10802071014	10802131014
95	10802061015	10802071015	10802131015
100	10802061016	10802071016	10802131016
105	10802061017	10802071017	10802131017
110	10802061018	10802071018	10802131018
115	10802061019	10802071019	10802131019

6.5



Washers



13mm



10mm

Ref. Number	Diam
10804001001	10
10804001002	13



Section of Cannulated Screws

Cannulated Screws

Durchbohrte Schrauben

Vis perforees

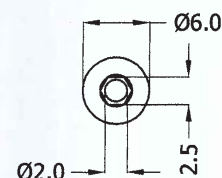
Indication : This product presents the following characteristics, hexagonal socket, 20 different lengths, 3 different thread diameter, bidirectional self-cutting blades. Besides these characteristics, the product is conditioned in a modular, compact tray, together with the instruments which allow an adequate handling on the surgeon.

Material : Certified Stainless Steel according to ASTM F.138 - ISO 5832/1.

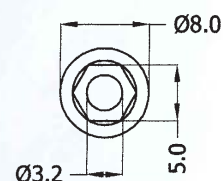
Thread Diam.	4.0	4.5	7.0	7.0
Head Diam.	6.0	8.0	9.0	9.0
Hex. Socket	2.5	5.0	5.0	5.0
Length mm	Short Thread	Short Thread	16mm Thread	32mm Thread
20		10802221001		
25	10802191025	10802221002		
30	10802191030	10802221003	10802081018	10802091018
35	10802191035	10802221004	10802081019	10802091019
40	10802191040	10802221005	10802081020	10802091020
45	10802191045	10802221006	10802081001	10802091001
50	10802191050	10802221007	10802081002	10802091002
55		10802221008	10802081003	10802091003
60		10802221009	10802081004	10802091004
65		10802221010	10802081005	10802091005
70		10802221011	10802081006	10802091006
75		10802221012	10802081007	10802091007
80		10802221013	10802081008	10802091008
85			10802081009	10802091009
90			10802081010	10802091010
95			10802081011	10802091011
100			10802081012	10802091012
105			10802081013	10802091013
110			10802081014	10802091014
115			10802081015	10802091015
120			10802081016	10802091016
125			10802081017	10802091017



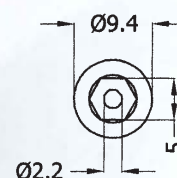
4.0



4.5



7.0



Washers



16mm



13mm

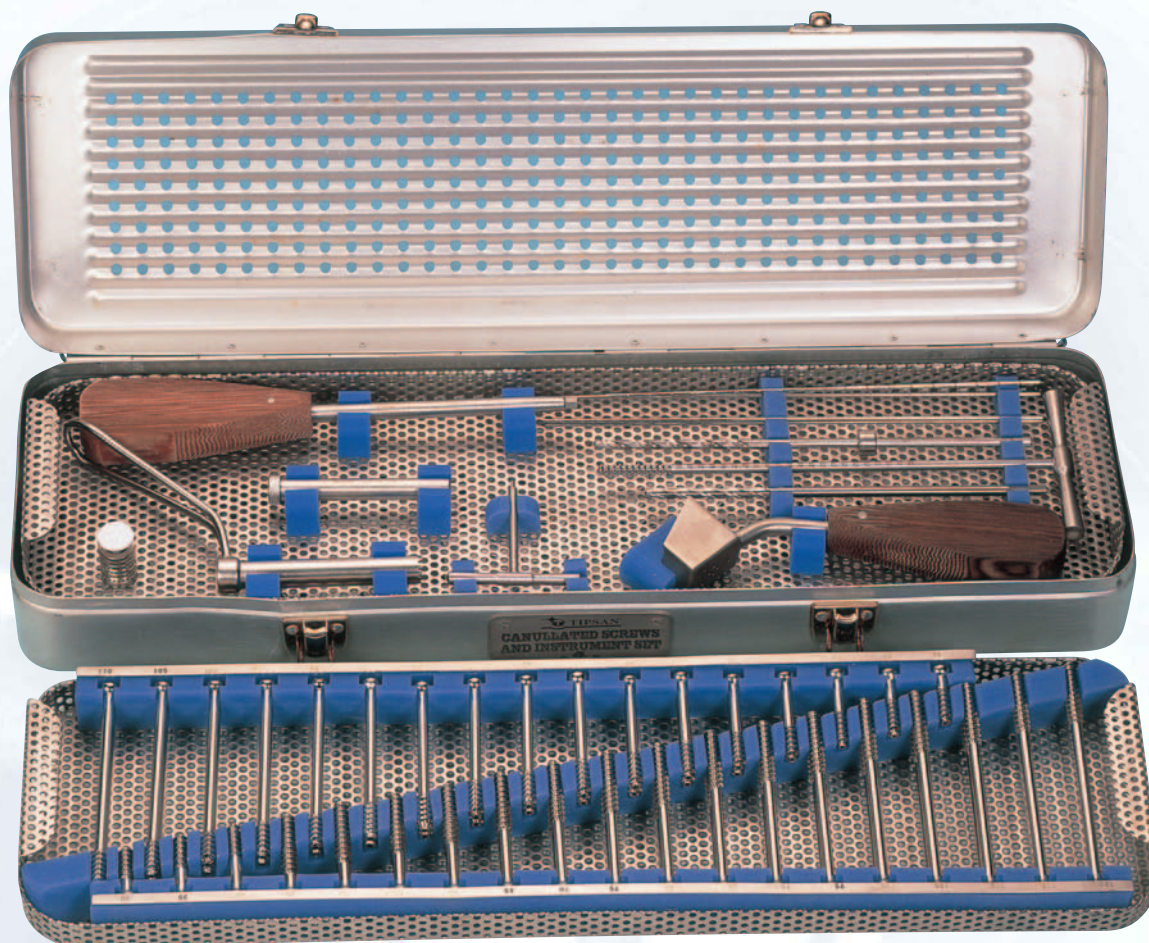


10mm

Ref. Number	Diam
10804001001	10
10804001002	13
10804001014	16



Cannulated screws implant & instrument set



Ref. Number : 18008010001

Ref.Number	Description	Pieces	Description	Pieces	Ref.Number
10802081018 10802081005	Ø 7.0 mm / 16 mm thread cannulated screws. 30-35-40-45-50-55-60-65 mm	ea.2	Parallel Target Device	1	10608140001
10802081006 10802081012	Ø 7.0 mm / 16 mm thread cannulated screws. 70-75-80-85-90-95-100 mm	ea.4	Tissue Protector Sleeve	1	10606131001
10802081013 10802081016	Ø 7.0 mm / 16 mm thread cannulated screws. 105-110-115-120 mm	ea.2	Cannulated Drill Ø 5.0 mm	1	10809031101
10802091001 10802091005	Ø 7.0 mm / 32 mm thread cannulated screws. 45-50-55-60-65 mm	ea.1	Drill with Stoper Ø 4.5 mm	1	10809061002
10802091006 10802091012	Ø 7.0 mm / 32 mm thread cannulated screws. 70-75-80-85-90-95-100 mm	ea.2	Calibrated Threaded Kirschner Wire Ø 2 x 230	1	10807091151
10802091013 10802091016	Ø 7.0 mm / 32 mm thread cannulated screws. 105-110-115-120 mm	ea.1	Cannulated Tap Ø 7.0 mm	1	10606031102
10804001014	Washer 16 mm.	16	Cannuladed Screw Driver Ø 5.0 mm	1	10604010402
10807031201	Kirschner Wire Ø 2.0 x 230 mm	2	T-Handle Wrench Ø 3.0 mm	1	10604001008
10807051005	Trocar Kirschner Wire Ø 2.0 x 230 mm	1			



Parallel Target Device



Ref. Number
10606140001

Cannulated Drill
Ø 5.0 mm



Ref. Number
10809031101

Calibrated Threaded Kirschner Wire
Ø 2.0 x 230 mm



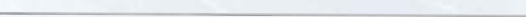
Ref. Number
10807091151

Cannulated Screwdriver
Ø 5.0 mm



Ref. Number
10604010402

Kirschner Wire
Ø 2.0 x 230 mm



Ref. Number
10807031201

Tissue Protector Sleeve



Ref. Number
10606131001

Drill with Stoper
Ø 4.5 mm



Ref. Number
10809061002

Cannulated Tap
Ø 7.0 mm



Ref. Number
10606031102

T-Handle Wrench
Ø 3.0 mm



Ref. Number
10604001008

Trocar Kirschner Wire
Ø 2.0 x 230 mm



Ref. Number
10807051005



Section of Bone Screws

Herbert Screw

Herbert Schrauben

Vis à Herbert

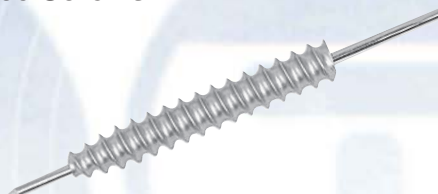


Indication : The Herbert cannulated bone screws has unique design that allows repairs to be made in a manner actually fosters healing.

Material : The Herbert screws is manufactured from titanium Ti6Al4V according to ASTM F.136 - ISO 5832/3. which has been specifically designed for the manufacture of orthopaedic implants. This alloy characterized by demonstrating excellent biocompatibility together with a high resistance of corrosion and superiormechanical strength.

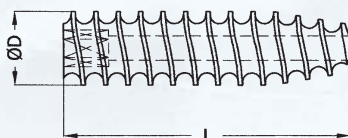
Ref. Number Titanium	Length mm
10802142001	16
10802142002	18
10802142003	20
10802142004	22
10802142005	24
10802142006	26
10802142007	28
10802142008	30

Cannulated Interference Screws



Indication : The core of the screw is large for optimum contact of the graft with the spongy part of the wall in bone tunnel - The diameter of the screw core is increased at its head to provide firm grip with cortical bone in tunnel. The screw is cannulated to provide passage for mandril preventing any deviation in spongy bone - The mandril also enables an easy exchange of the screw if case arises. Softly rounded thread edge - Large pitch thread to reduce excessive rubbing with fibers.

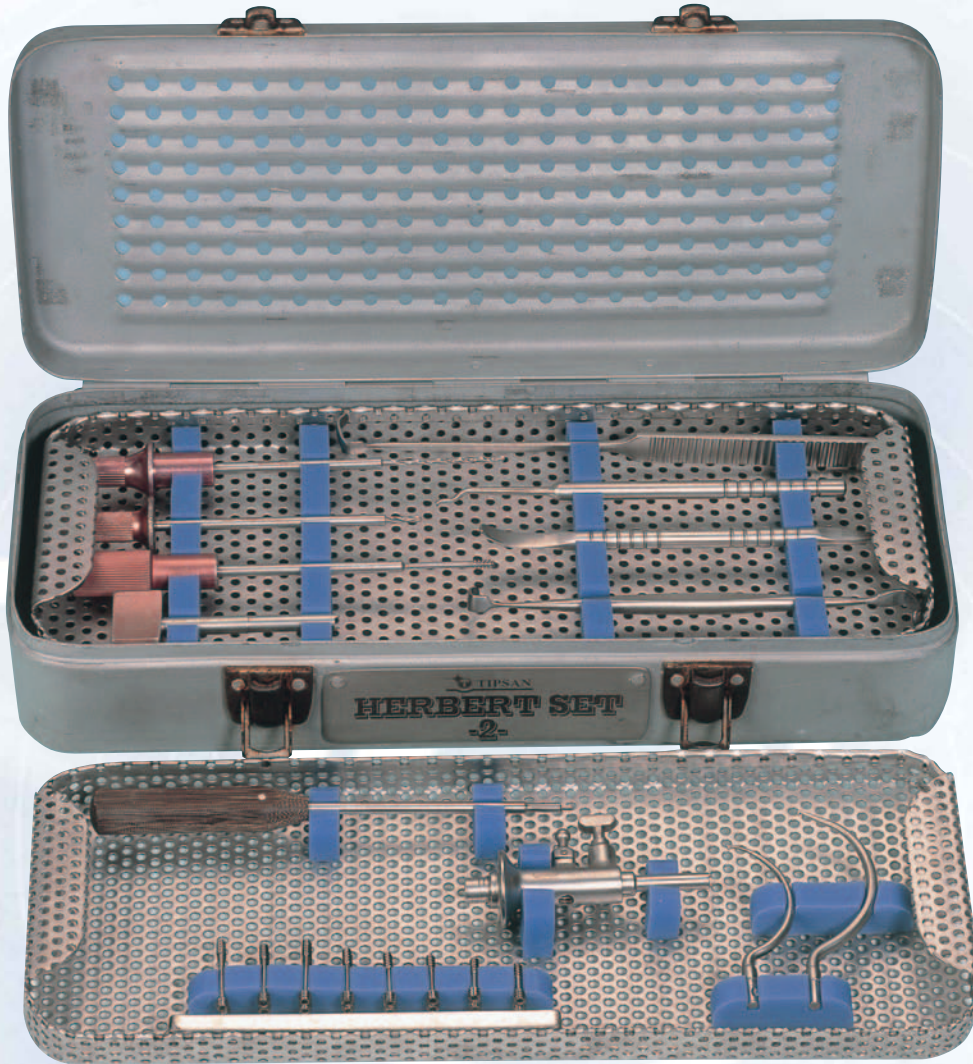
Material : The cannulated interference screws is manufactured from titanium Ti6Al4V according to ASTM F.136 - ISO 5832/3. which has been specifically designed for the manufacture of orthopaedic implants. This alloy characterized by demonstrating excellent biocompatibility together with a high resistance of corrosion and superiormechanical strength.



Ref. Number Titanium	Size ØD mm	Length mm
10802232001	7	20
10802232002	7	25
10802232003	7	30
10802232004	7	35
10802232005	7	40
10802232006	8	20
10802232007	8	25
10802232008	8	30
10802232009	8	35
10802232010	8	40
10802232011	9	20
10802232012	9	25
10802232013	9	30
10802232014	9	35
10802232015	9	40
10802232016	10	20
10802232017	10	25
10802232018	10	30
10802232019	10	35
10802232020	10	40
10802232021	11	20
10802232022	11	25
10802232023	11	30
10802232024	11	35
10802232025	11	40



Herbert screws implant & instrument set



Ref. Number : 18008020001

Ref.Number	Description		Pieces	Ref.Number	Description		Pieces
10802142001	Herbert screw	16	1	10608090001	Sleeve Guide - Trephine		1
10802142002	Herbert screw	18	1	10602151101	Scafoïd Hook Elevator		1
10802142003	Herbert screw	20	1	10606200103	Pilot Drill	Ø 2.5	1
10802142004	Herbert screw	22	1	10606200102	Main Drill	Ø 2.0	1
10802142005	Herbert screw	24	1	10602151003	Blade Retractor		1
10802142006	Herbert screw	26	1	10602151002	Long Retractor		1
10802142007	Herbert screw	28	1	10602151001	Dissector		1
10802142008	Herbert screw	30	1	10608091002	Alignment Guide		1
10604010008	Hexagonal head screw driver	Ø 1.75	1	10608091103	Scaphoid Blade		1
10606200001	Tap		1	10608091104	Straight Blade		1



Screwdriver Ø 1.75



Ref. Number
10604010008

Tap



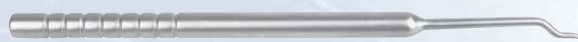
Ref. Number
10606200001

Sleeve Guide - Trephine



Ref. Number
10608090001

Scafold Hook Elevator



Ref. Number
10602151101

Pilot Drill
Ø 2.5



Ref. Number
10606200103

Main Drill Ø 2.0



Ref. Number
10606200102

Blade Retractor



Ref. Number
10602151003

Long Retractor



Ref. Number
10602151002

Disector



Ref. Number
10602151001

Alignment Guide



Ref. Number
10608091002

Scaphoid Blade



Ref. Number
10608091103

Straight Blade



Ref. Number
10608091104



Instruments for Screw Fixation

Taps



For pre-threading the drilled screw hole for insertion of the cortical and cancellous screws. Quick coupling end to be used with tap sleeve.

Ref. Number	AO Shaft (ø)
10606021001	2.7
10606021002	3.5
10606021003	4.5
10606021004	6.5

T-Bar Taps



For pre-threading the drilled screw hole for insertion of the cortical and cancellous screws.

T-Bar (ø)	Ref. Number
2.7	10606031001
3.5	10606031002
4.5	10606031003
6.5	10606031004

Drill with Round Shaft



To be used with cortical and cancellous screws in preparing the "gliding" hole in the proximal cortex for interfragmental compression.

Ref. Number	Length (ø)	Round Shaft (ø)
10809011003	110	2.0
10809011005	110	2.5
10809011006	145	2.7
10809011008	130	3.5
10809011010	130	4.0
10809011009	130	4.5
10809011007	130	3.2

Drill with AO Shaft



To be used with cortical and cancellous screws in preparing the "gliding" hole in the proximal cortex for interfragmental compression. End of the drill with quick coupling for use with tap handle.

AO Shaft (ø)	Length (ø)	Ref. Number
2.0	110	10809041001
2.5	130	10809041002
2.7	130	10809041003
3.5	150	10809041005
4.0	150	10809041006
4.5	130	10809041007
3.2	130	10809041004



Instruments for Screw Fixation

Universal Bone Drill

This widely used hand drill has a two - to - one gear ratio to ensure accurate drilling. The comfortable pistol grip handle gives the user perfect control. Release of the thumb operated lever, conveniently placed, instantly stops the turning of the gears and locks the chuck. The chuck shaft and the entire length of the drill is cannulated to accommodate Steinmann pins Kirschner wires, long shank drills, screw driver bits etc...



Ref. Number
10606061002

Neutral and Load Drill Guide (Ø 3.5 mm)

Recommended drill
Ø 2.5 mm



Combines the load and neutral drill guides into one instruments. The load guide is identified by etching on handle. Arrows located on both hands must point toward the fracture line.

Ref. Number
10606051002

Neutral and Load Drill Guide (Ø 2.7 mm)

Recommended drill
Ø 2.0 mm

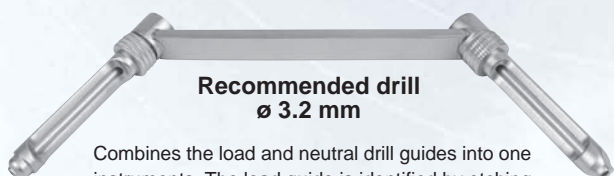


Combines the load and neutral drill guides into one instruments. The load guide is identified by etching on handle. Arrows located on both hands must point toward the fracture line.

Ref. Number
10606051001

Neutral and Load Drill Guide (Ø 4.5 mm Long)

Recommended drill
Ø 3.2 mm

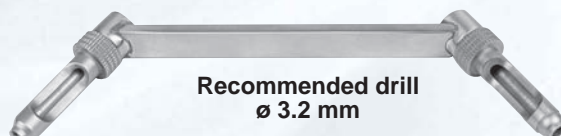


Combines the load and neutral drill guides into one instruments. The load guide is identified by etching on handle. Arrows located on both hands must point toward the fracture line.

Ref. Number
10606051004

Neutral and Load Drill Guide (Ø 4.5 mm)

Recommended drill
Ø 3.2 mm



Combines the load and neutral drill guides into one instruments. The load guide is identified by etching on handle. Arrows located on both hands must point toward the fracture line.

Ref. Number
10606051003



Instruments for Screw Fixation

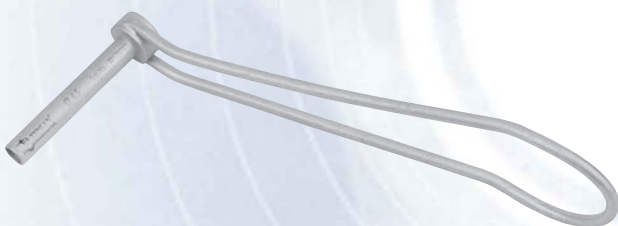
Bending Iron

May be used for bending and twisting straight and angled plates. Opening, 4mm and 6 mm located on both ends to secure plates. Plates should not be bent a plate holes reverse bent or bent at acute angles (for gentle curvature of the plate only).



Ref. Number
10609021004

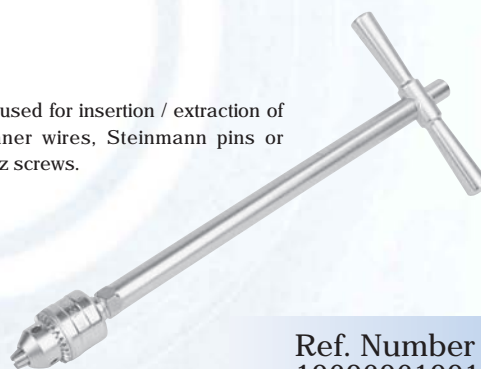
Drill Guide (Ø 4.5 mm)



Ref. Number
10606041002

Chuck for Steinmann Pins and Kirschner Wires

To be used for insertion / extraction of
Kirschner wires, Steinmann pins or
Schanz screws.



Ref. Number
10606061001

Tap Handle

Perfect coupling to the AO shaft quick
coupling drills and taps.



Ref. Number
10604001010

Drill Guide (Ø 3.2 mm)



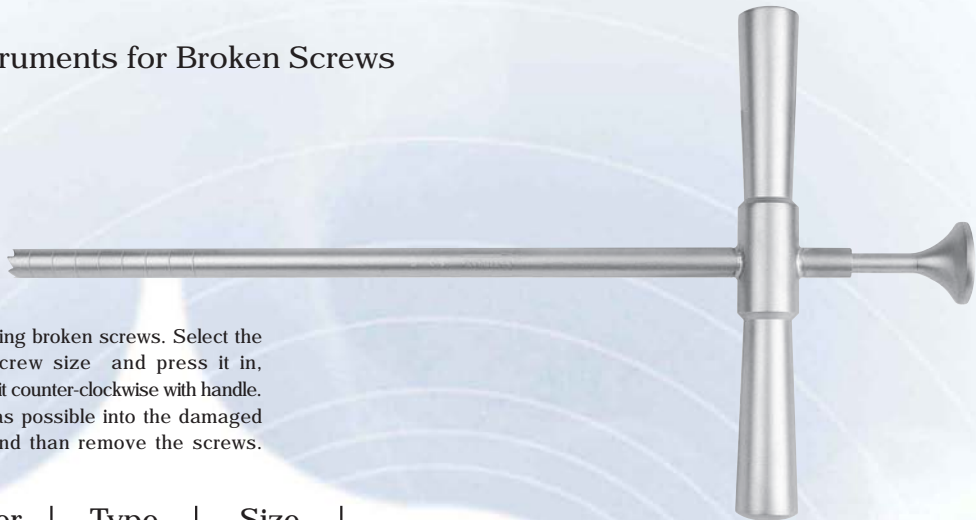
To be used with 3.2 mm drill

Ref. Number
10606041001



Instruments for Screw Fixation

Removal Instruments for Broken Screws



To be used for removing broken screws. Select the correct extraction screw size and press it in, simultaneously turning it counter-clockwise with handle. Screw it as straight as possible into the damaged hexagonal socket, and then remove the screws.

Ref. Number Stainless Steel	Type No	Size (ø)
10606071001	1	3.9 - 5.0
10606071002	2	6.4 - 8.0

Screw Depth Gauge

To be used in plating or interfragmental compression to determine screw length up to 80 mm. Available for small screws length up to 50 mm. Ruler and sleeve are snap-fit for easier cleaning.



Ref. Number Stainless Steel	Size
10608031001	Small
10608031002	Large

Plate Bender

To be used for bending bone plates and intramedullary pins.



Ref. Number Stainless Steel	Type
10609021002	Plain
10609021001	Holes

Self Holding Foceps

For removal of screws from screw tray.



Ref. Number
10601091001

Henning Plaster Cast Spreader



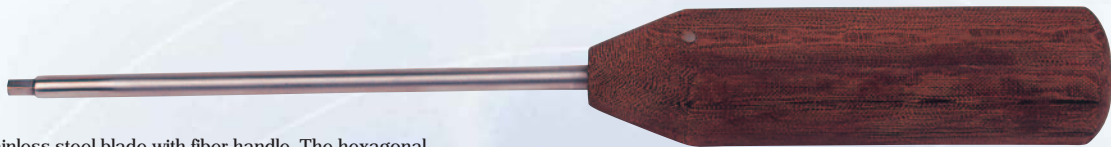
The spread of the jaws is approximately 50 mm. The thin, grooved jaws of this instrument make it easy to insert between the cut edges of the cast. The jaws spread open and permit the application of the maximum amount of pressure with a minimum of effort.

Ref. Number Stainless Steel	Size
10605051008	Small
10605051013	Large



Instruments for Screw Fixation

Hexagonal Head Screwdriver



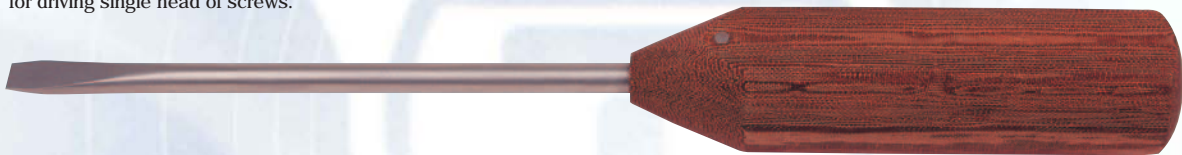
Stainless steel blade with fiber handle. The hexagonal screwdriver is a well balanced instrument with fiber handle which has a comfortable grip and suitable for driving hexagonal recess head screw. To be used for 4.5 mm cortical screws, 4.5 mm malleolar screws, 6.5 mm cancellous screws. Available small size of this screwdriver to be used for 3.5 mm small cortical screws.

Ref. Number Stainless Steel	Diam (mm)
10604010001	3.5
10604010002	4.5

Single-Head Screwdriver

Stainless steel blade with fiber handle. Used to set screws which have been partially inserted. The single head screwdriver is a well balanced instrument with fiber handle which has a comfortable grip and suitable for driving single head of screws.

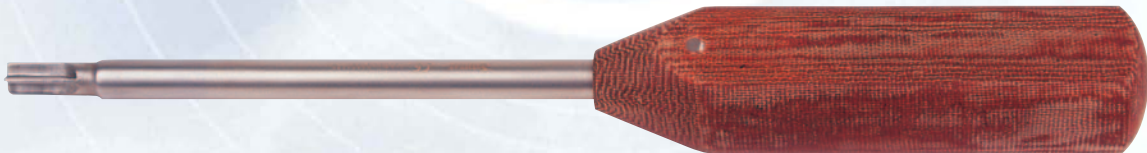
Ref. Number
10604010201



Slotted Head Screwdriver

Stainless steel blade with fiber handle. The slotted head screwdriver allows full control and enables it to be driven quickly and accurately into position.

Ref. Number
10604010301



Phillips Head Screwdriver

Stainless steel blade with fiber handle. The Phillips screwdriver is a well balanced instrument with fiber handle which has a comfortable grip and suitable for driving Phillips head screws.

Ref. Number
10604010101





Instruments for Screw Fixation

Hammer with Teflone



Designed to offer a comfortable slip resistance and well balanced feel. The nylon head of this hammer are non-sparking tough durable and not damaged chisels or other instruments being used. Also helps to absorb shock and reduce noise.

Ref. Number Stainless Steel	Weight (gr)
10607010001	500
10607010002	1000

Hammer



Designed to offer a comfortable slip resistance and well balanced feel.

Ref. Number Stainless Steel	Weight (gr)
10607011001	250
10607011002	500
10607011003	750
10607011004	1000

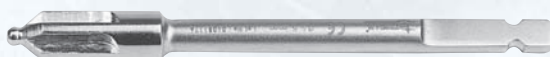
Countersink with T-Shaft

To be used in inter-fragmental compression when preparing the proximal cortex to properly seat hexagonal recess head screws. Pilot tip nose for proper alignment of screw with hole direction. Available T-handle type (for 3.5 - 4.5 mm screws) and AO Shaft (4.5mm) with quick coupling end.



Ref. Number Stainless Steel	Diam (mm)
10606081001	4.5
10606081011	3.5

Countersink with AO Shaft (Ø 4.5mm)



Ref. Number
10606081002

Drill - Tap Handle



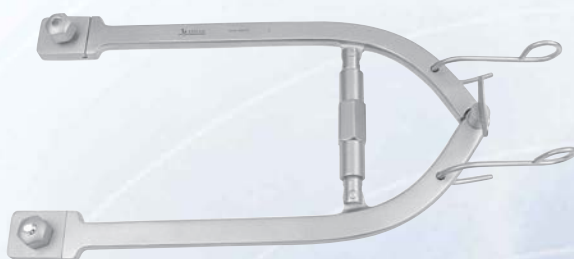
Perfect coupling to AO shaft drill and taps. The fiber handle has a comfortable grip which allows controlled driving of taps and drills.

Ref. Number
10604000010



Instruments for Wire Tensioning

Kirschner Wire Tractors



The side arms of the Kirschner wire tractors can be adjusted by turning the "T" handle, thus opening the tractor to fit the width of the extremity on which the tractor is to be used. Space between the tractor arms should be slightly greater than the width of the extremity to avoid any possibility of pressure against soft tissue. The tractor is hooked over both ends of wire and gentle pressure placed inwardly on both the toothed dogs simultaneously and held there while the "T" handle is turned to the right. One or two turns of the handle places the wire under very great tension. When longitudinal extension is exerted on the extremity it is essential that the wire is under strong tension in order to prevent bowing or cutting of the wire into the tissue.

Ref. Number	Size (ø)
10705011001	Small
10705011002	Large

Cerclage Wire



To be used for interfragmental fixation and as a tension bent with wire twister. Soft, in coils of 10 meter.

Ref. Number	Size (ø)
10807061002	0.4
10807061003	0.5
10807061004	0.6
10807061005	0.7
10807061006	0.8
10807061007	0.9
10807061008	1.0
10807061009	1.2
10807061010	1.5

Steinmann Pin Holder (Large)

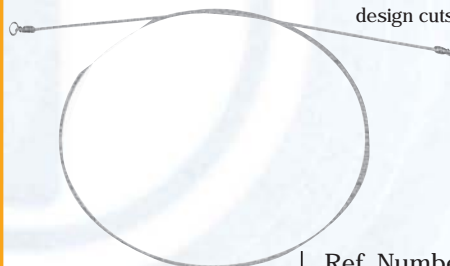


Large for femur and knee, complete with Steinmann pin 4 mm.

Ref. Number
10705021002

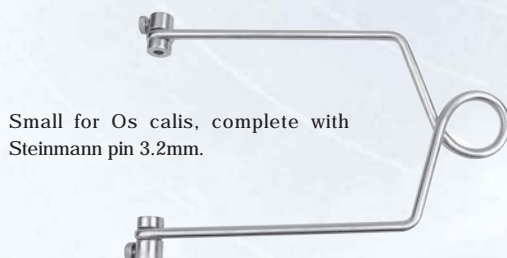
Gigli Saw

For cutting hard bone in difficult cutting situations or locations. Round tooth design cuts in all directions.



Ref. Number	Length (mm)
10807071001	30
10807071003	40
10807071002	50

Steinmann Pin Holder (Small)



Small for Os calis, complete with Steinmann pin 3.2mm.

Ref. Number
10705021001

Gigli Saw Handle

Special handle for Gigli Saw. Supplied pair.



Ref. Number
10601111001